



SIRIUS



ELNSM72M-HC-HV Series



MBB HC MONOCRYSTALLINE PV MODULE 540-555W



Sirius 182M Series

Elin redefined the high-efficiency module series by integrating 182mm silicon wafers with multi-busbar and half-cut cell technologies. Elin panel combined creative technology effectively and extremely improved the module efficiency and power output.

KEY FEATURES



Less mismatch to get more power



Less power loss by minimizing the shading impact.



Competitive low light performance.



Ideal choice for utility and commercial scale projects by reduced BOS and improve ROI.



In stringent environment condition :
• Sand, acid, salt and hail stones,
• 2400pa wind load and 5400pa snow load.
• PID FREE

QUALITY SYSTEM



ISO 9001:2015, ISO 14001:2015, ISO 45001: 2018,
ISO 27001:2013, ISO 10002:2004

PRODUCT CERTIFICATION



TS EN 61215, TS EN 61730
IEC 61215, IEC 61730, IEC 62804 (PID FREE)

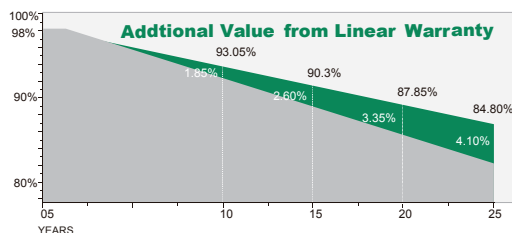
WARRANTY

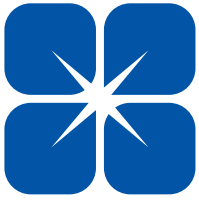


Guarantee On Product



Linear Power Output Warranty





SIRIUS



ELNSM72M-HC-HV Series

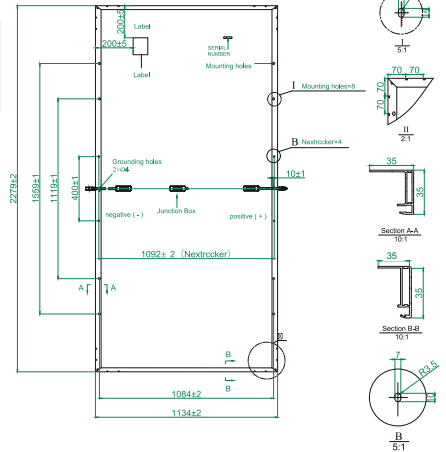
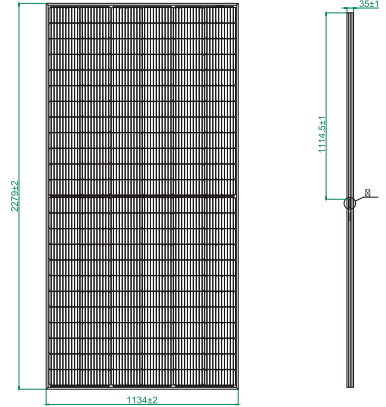
ELECTRICAL CHARACTERISTICS

Module Type	ELNSM72M-540-HC-HV		ELNSM72M-545-HC-HV		ELNSM72M-550-HC-HV		ELNSM72M-555-HC-HV	
	STC	NOCT	STC	NOCT	STC	NOCT	STC	NOCT
Maximum Power at STC (Pmp)	540	406	545	412	550	416	555	420
Open Circuit Voltage (Voc)	49.50	46.18	49.75	46.55	49.90	46.68	50.02	46.85
Short Circuit Current (Isc)	13.81	11.16	13.93	11.13	14.00	11.17	14.07	11.21
Maximum Power Voltage (Vmp)	41.55	38.39	41.80	39.20	41.96	38.43	42.11	39.66
Maximum Power Current (Imp)	13.00	10.59	13.04	10.51	13.11	10.55	13.18	10.59
Module Efficiency at STC (η_m)	20.9		21.1		21.3		21.5	
Power Tolerance	(0, +4,99 W)							
Maximum System Voltage	1500V DC							
Maximum Series Fuse Rating	25 A							

* Measurement Tolerance +/- 3%

STC: Irradiance 1000 W/m² module temperature 25°C AM=1.5;

NOCT: Irradiance 800W /m², Ambient Temperature 20 °C, AM = 1.5, Wind Speed 1m /s



SICAKLIK KARAKTERİSTİKLERİ

Pmax Temperature Coefficient	-0.34 %/°C
Voc Temperature Coefficient	-0.26 %/°C
Isc Temperature Coefficient	+0.05 %/°C
Operating Temperature	-40 ~ +85 °C
Nominal Operating Cell Temperature (NOCT)	45 ± 2 °C

MECHANICAL SPECIFICATIONS

External Dimensions	2279 x 1134 x 35 mm
Weight	27 kg
Solar Cells	PERC Mono (144 pcs)
Front Glass	3.2 mm AR coating tempered glass, low iron
Frame	Anodized aluminum alloy
Junction Box	IP68,3 diodes
Output Cables*	4.0 mm ² , 250mm(+)/350mm(-) or Customized Length
Mechanical Load	Front side 5400Pa / Rear side 2400Pa

*Output cable lengths should be specified at the time of order.

PACKING CONFIGURATION

	2279x 1134 x 35 mm	
Container	20'GP	40'HQ
Pieces per Pallet	31+4*	31
Pallets per Container	4	20
Pieces per Container	140	620

* 31+4 pieces per pallet is the special package which only suits for container transport.

Made in Turkey.

I - V CURVE

